



HYUNDAI Technical Service Bulletin

Group	ELECTRICAL
Number	06-90-022
Date	NOVEMBER, 2006
Model	2006-2007 AZERA, 2006-2007 SONATA, 2007 SANTA FE, 2007 ELANTRA

Subject
2006 & 2007 MODEL YEAR AUTO DOOR LOCK - USER OPTION SETTINGS

CIRCULATE TO:	<input type="checkbox"/> GENERAL MANAGER	<input checked="" type="checkbox"/> PARTS MANAGER	<input checked="" type="checkbox"/> TECHNICIAN
<input checked="" type="checkbox"/> SERVICE ADVISOR	<input checked="" type="checkbox"/> SERVICE MANAGER	<input checked="" type="checkbox"/> WARRANTY MGR	<input type="checkbox"/> SALES MANAGER

DESCRIPTION

Some 2006 & 2007 model year Hyundai vehicles are equipped with a user-selectable auto door lock and unlock feature. The following chart provides a summary of which vehicles have this feature.

MODEL	AUTO LOCK	SELECTABLE SETTINGS	AUTO UNLOCK	SELECTABLE SETTINGS
2007 ACCENT				
2006 – 2007 AZERA	YES	1. OFF 2. SHIFT-LINKED - LEVER IN 'D' 3. SPEED-LINKED - 20Km/H	YES	1. OFF 2. SHIFT-LINKED - LEVER IN 'P' 3. IGNITION-LINKED - KEY OUT 4. DRIVER'S DOOR-LINKED - INTERIOR DOOR RELEASE LEVER
2007 ELANTRA	YES	1. OFF 2. SPEED-LINKED - 20, 40 Km/H	YES	1. OFF 2. IGNITION-LINKED - KEY OUT
2007 ENTOURAGE				
2007 SANTA FE	YES	1. OFF 2. SPEED-LINKED - 20, 25, 30, 35, 40 Km/H	NO	
2006-2007 SONATA	YES	1. OFF 2. SPEED-LINKED - 20, 25, 30, 35, 40 Km/H	NO	
2006 TIBURON				
2006 TUCSON				

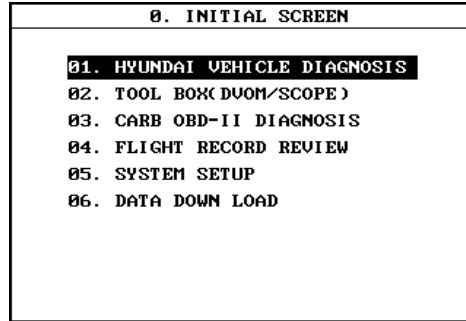
This TSB provides programming instructions for each vehicle using either the Hi-Scan Pro or the Global Diagnostic System (GDS) tool.

PROCEDURE - HI-SCAN

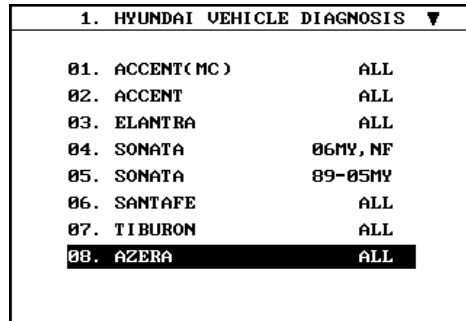
The Hi-Scan Pro programming procedure is similar for all vehicles. The Azera will be used as an example for steps 1 through 7.

1. Connect the Hi-Scan Pro tool to the vehicle's Data Link Connector (DLC) and turn the vehicle's ignition '**ON**'
2. Turn the Hi-Scan Pro '**ON**' and press **ENTER**.

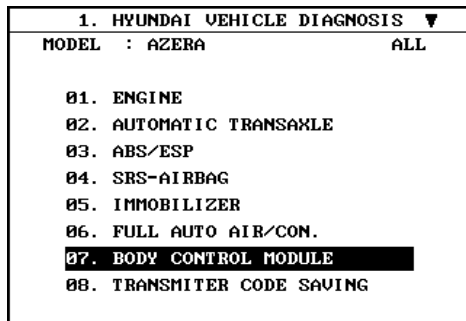
3. Select 'HYUNDAI VEHICLE DIAGNOSIS' and press **ENTER**.



4. Select *model* and press **ENTER**. (*Azera* used as an example).

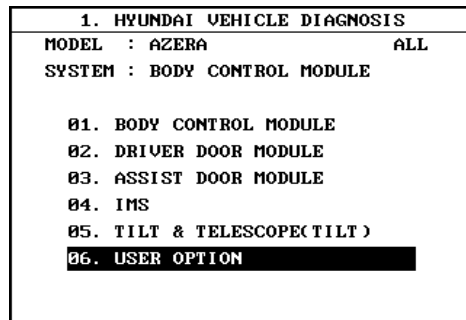


5. Select 'BODY CONTROL MODULE' and press **ENTER**.



6. Select 'USER OPTION' and press **ENTER**.

Note that 'BODY CONTROL MODULE' will also appear on this screen as an option, however, it is not used for this procedure.





HYUNDAI Technical Service Bulletin

Group

ELECTRICAL

Number

06-90-022

7. For the Azera model only, select 'AUTO DOOR LOCK' and press ENTER.

All other models can skip this step and go directly to step 8.

1. HYUNDAI VEHICLE DIAGNOSIS	
MODEL : AZERA	ALL
SYSTEM : BODY CONTROL MODULE	
USER OPTION	
01. LOCK/UNLOCK ALARM	
02. ARM/DISARM BY KEY	
03. AUTO DOOR LOCK	
04. GET IN & GET DOWN LINKAGE	

8. Using the provided screen shots for each vehicle, select the appropriate setting as chosen by the vehicle owner.

AZERA

AUTO DOOR LOCK

>>>>> CURRENT SET STATUS >>>>>
 AUTO DOOR LOCK DISABLE
 AUTO DOOR (UN)LOCK DISABLE
 >>>>> CHANGING STATUS >>>>>

AUTO LOCK IN 'D'RIVE	→	LEVER LINKAGE AUTO DOOR LOCK
AUTO LOCK AT 20KPH	→	SPEED LINKAGE AUTO DOOR LOCK
AUTO LOCK DISABLE	→	AUTO DOOR LOCK DISABLE
AUTO UNLOCK IN 'P'ARK	→	LEVER LINKAGE A/DOOR UNLOCK
AUTO UNLOCK ALL DOORS		
WHEN DRIVER'S DOOR RELEASE LEVER IS ACTUATED	→	DRIVER LINKAGE AUTO DOOR UNLOCK
AUTO UNLOCK DISABLE	→	AUTO DOOR UNLOCK DISABLE
AUTO UNLOCK WHEN KEY IS REMOVED FROM IGN.	→	UNLOCK AT KEY OUT

SONATA

1.6 USER OPTION

AUTO DOOR LOCK STATUS	DISABLE
ARM/DISARM BY KEY(+RK)	DISABLED
HORN ANSWER BACK(+BK)	DISABLED

DATA WRITE

DISABLE

AFTER SELECT (↔)KEY, PRESS [ENTER].

SELECT AUTO DOOR LOCK STATUS AND USE THE ↔ KEYS TO ADJUST THE SETTINGS.

OPTIONS FOR THE AUTO LOCK FUNCTION INCLUDES 20, 25, 30, 35, AND 40 KPH. THERE IS NO AUTO UNLOCK FEATURE.

SANTA FE

SELECT AUTO DOOR LOCK STATUS AND USE THE \leftarrow/\rightarrow KEYS TO ADJUST THE SETTINGS.

OPTIONS FOR THE AUTO LOCK FUNCTION INCLUDES **20, 25, 30, 35, AND 40** KPH. THERE IS NO AUTO UNLOCK FEATURE.

1.6 USER OPTION	
AUTO DOOR LOCK STATUS	DISABLE
ARM/DISARM BY KEY(+RK)	DISABLED
HORN ANSWER BACK(+RK)	DISABLED
DATA WRITE	
<div style="border: 1px solid black; padding: 2px; display: inline-block;">DISABLE</div>	
AFTER SELECT (\leftarrow/\rightarrow)KEY, PRESS [ENTER].	

ELANTRA

SELECT AUTO DOOR LOCK STATUS AND USE THE \leftarrow/\rightarrow KEYS TO ADJUST THE SETTINGS.

OPTIONS INCLUDE **20 AND 40** KPH.

SELECT AUTO DOOR UNLOCK STATE AND USE THE \leftarrow/\rightarrow KEYS TO ADJUST THE SETTINGS. OPTIONS INCLUDE UNLOCK UPON IGN. KEY REMOVAL AND DISABLED.

1.6 USER OPTION	
AUTO DOOR LOCK STATUS	40Km/h
AUTO DOOR UNLOCK STATE	ENABLE
DOOR KEY ARM/DISARM	ENABLE
DATA WRITE	
<div style="border: 1px solid black; padding: 2px; display: inline-block;">DISABLE</div>	
AFTER SELECT (\leftarrow/\rightarrow)KEY, PRESS [ENTER].	

9. After selecting the appropriate settings, use the '**ESC**' key to return to the main menu.
10. Turn **OFF** the Hi-Scan tool and disconnect the DLC connector.
11. Test drive the vehicle to confirm the auto lock & unlock settings.
12. Procedure complete.

CONVERSION TABLE

20 Km/h	25 Km/h	30 Km/h	35 Km/h	40 Km/h
13 MPH	16 MPH	19 MPH	22 MPH	25 MPH



PROCEDURE - GDS

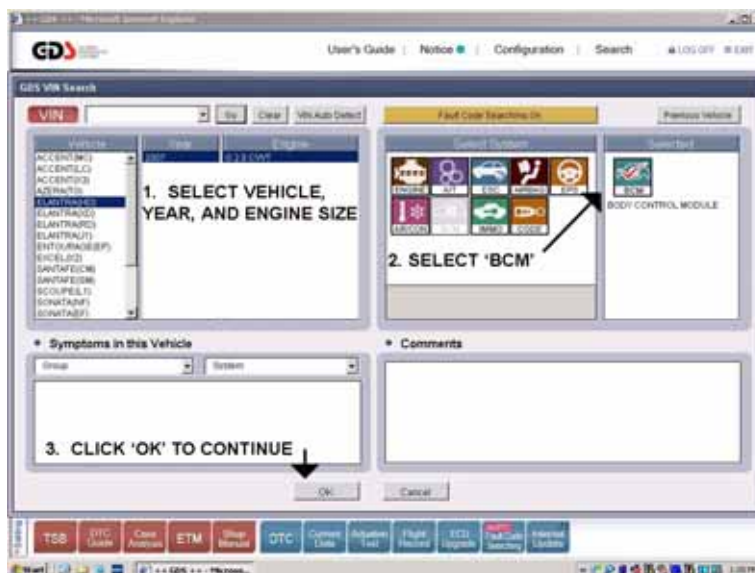
The GDS programming procedure is similar for all vehicles. The 2007 Elantra will be used as an example for steps 1 through 5.

1. Connect the Vehicle Communication Interface (VCI) module to the vehicle's Data Link Connector (DLC) port. Turn on both the VCI module and the vehicle's ignition.
2. Start the GDS program.
3. Select '**SYSTEM OPTION**'.

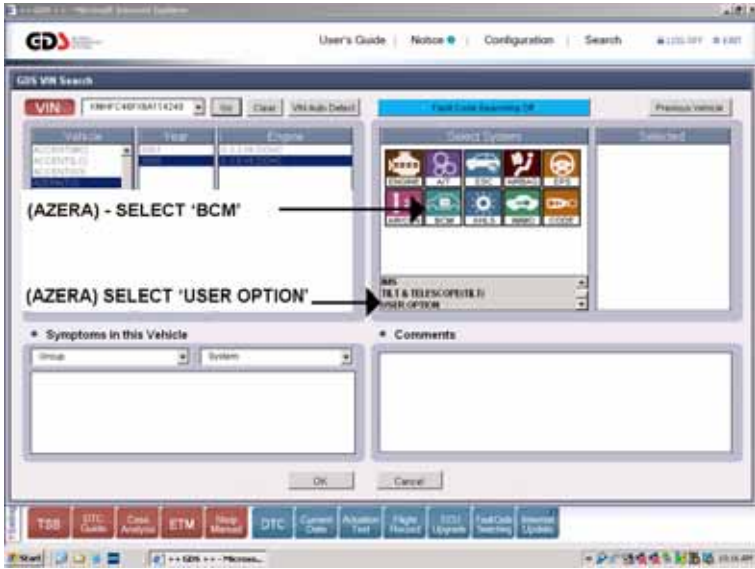


4. Select the model, year, and engine size. You may alternately use the 'VIN Auto Detect' mode.

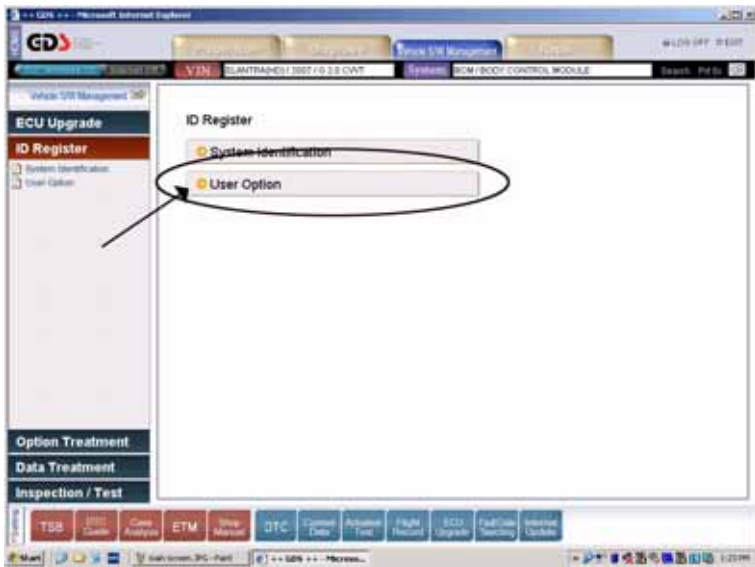
4a. All models except Azera, select '**BCM**' and click '**OK**'.



4b. Azera model only, select '**BCM**' and '**User Option**' from the drop down menu box. Click '**OK**'.



5. Select '**USER OPTION**'.





6. Using the provided screen shots for each vehicle, select the appropriate setting as chosen by the vehicle owner.

AZERA

2. SELECT LOCK OR UNLOCK SETTING

1. SELECT 'AUTO DOOR LOCK'

3. SELECT DESIRED SETTING

4. ONCE COMPLETED, CLICK 'OK'

ITEM	VALUE
Auto Door Lock (+FRK) :	Auto Door Lock Disable
Auto Door Unlock (+FRK) :	Auto Door Unlock Disable

[Data Write]

1. Select the item to modify.
2. Select the value in combo box.
3. Press [OK] button.

Auto Door Lock Disable

Ok Cancel

SONATA

1. USING THE CURSOR, SELECT THE APPROPRIATE FEATURE.

2. NEXT, SELECT THE DESIRED SETTING FROM THE DROP DOWN MENU BOX.

3. ONCE COMPLETED, CLICK 'OK'.

ITEM	VALUE
Auto Door Lock Status :	0
Arm/Disarm By Key(+FRK) :	ENABLE
Horn Answer Back(+FRK) :	ENABLE

[Data Write]

1. Select the item to modify.
2. Select the value in combo box.
3. Press [OK] button.

100m/h

200m/h

150m/h

200m/h

Ok Cancel

SANTA FE

1. USING THE CURSOR, SELECT THE APPROPRIATE FEATURE.

ITEM	VALUE
Auto Door Lock Status :	DISABLE
Arm/Disarm By Key(+FK0) :	ENABLE
Horn Answer Back(+FK0) :	ENABLE

[Data Write]

1. Select the item to modify
2. Select the value in combo box
3. Press [OK] button

2. NEXT, SELECT THE DESIRED SETTING FROM THE DROP DOWN MENU BOX.

3. ONCE COMPLETED, CLICK 'OK'.

TSB DTC Guide Case Analysis ETM Shop Manual DTC Current Data Actuation Test Flight Record ECU Upgrade Fault Code Searching Internet Update

ELANTRA

1. USING THE CURSOR, SELECT THE APPROPRIATE FEATURE.

ITEM	VALUE
Auto Door Lock Status :	40 km/h
Auto Door Unlock :	ENABLE
Arm/Disarm By Key(+FK0) :	ENABLE

[Data Write]

1. Select the item to modify
2. Select the value in combo box
3. Press [OK] button

2. NEXT, SELECT THE DESIRED SETTING FROM THE DROP DOWN MENU BOX.

3. ONCE COMPLETED, CLICK 'OK'.

TSB DTC Guide Case Analysis ETM Shop Manual DTC Current Data Actuation Test Flight Record ECU Upgrade Fault Code Searching Internet Update

7. Once all of the desired settings have been selected, disconnect the VCI module from the vehicle.

8. Test drive the vehicle to confirm the auto lock & unlock settings.

9. Procedure complete.



HYUNDAI Technical Service Bulletin

Group	ELECTRICAL
Number	06-90-022

WARRANTY INFORMATION

This procedure is not a warranty repair.